



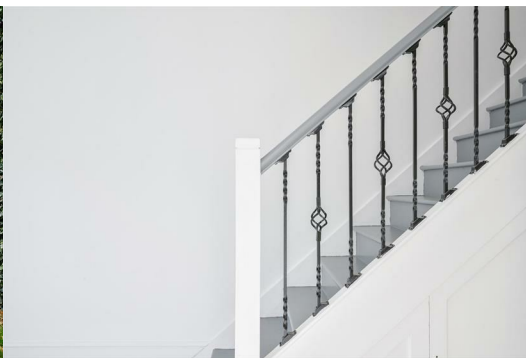
## 14 Ashcombe Road

, Merstham, RH1 3BY

**Guide Price £725,000**



A SIX bedroom semi detached property offered to the market with 27' kitchen/breakfast room, two further reception rooms, ground floor bedroom/guest suite with kitchen area and bathroom, en-suite shower and walk-in wardrobe to principle bedroom, family bathroom, landscaped rear garden, 22' home office and off street parking for two vehicles. The property benefits from marble flooring with underfloor heating to the ground floor and solar panels and is within walking distance to Merstham village with mainline railway station and local amenities. Bus routes serve Redhill town centre which offers more comprehensive facilities including a good choice of shops and restaurants and local weekly market. The M23/25 can be accessed at the Hooley Interchange, Junction 7 providing good connections to London, Gatwick and the South coast.



UPVC DOUBLE GLAZED FRONT DOOR leading to:

**ENTRANCE HALL**

Stairs leading to first floor landing, power points, media point, marble tiled floor, underfloor heating, understairs cupboard, door to:

**FAMILY ROOM 10'11" x 9'11" (3.33m x 3.02m)**

Front aspect UPVC double glazed window, continuation of marble tiled floor, dimmer switch, power points, underfloor heating.

**SITTING ROOM 14'8" x 12'5" (4.47m x 3.78m)**

Continuation of marble tiled floor, power points, down-lighters, underfloor heating.

**INNER LOBBY**

Giving access to:

**DOWNSTAIRS CLOAKROOM**

Low level WC, inset wash hand basin with chrome style mixer tap, continuation of marble tiled floor, tiled walls, mosaic style tiling, extractor fan, downlighters, understairs cupboard housing water tank fuse board and meters.

**UTILITY ROOM 5'10" x 4'6" (1.78m x 1.37m)**

Wall mounted unit, worksurface, space for washing machine, tiled floor, power points, tiled wall, downlighters.

**KITCHEN BREAKFAST ROOM 27'7" x 12'6" (8.41m x 3.81m)**

Continuation of marble tiled floor, bi-fold doors with inset blinds, giving access to decking and rear garden, wall mounted thermostat heater, downlighters, Velux window with mechanised blinds.

**KITCHEN AREA**

Continuation of marble tiled floor, a range of wall mounted and base level units in Shaker style, square edge wooden work surface, cup-board housing boiler, tiled walls, centre unit with integrated dishwasher. Butler style sink with chrome style mixer tap, space for American style fridge/freezer, integrated Bosch microwave oven, space for Range cooker, power points, downlighters, dimmer switch, larder cupboard with sensor light, additional power points on centre island with breakfast bar, underfloor heating.

**GUEST SUITE WITH KITCHEN AREA AND BATHROOM 15'1" x 10'08" (4.60m x 3.25m)**

Own UPVC double glazed door, front aspect UPVC double glazed window, radiator, power points,

**KITCHEN AREA**

Wall mounted base level units, roll top work surface, stainless steel sink, integrated electric oven. Integrated induction hob, space for fridge, wood floor, power points.

**BATHROOM**

A White three piece suite comprising low level WC, vanity unit with inset wash hand basin, panel enclosed bath, with mixer tap and shower attachment, tiled walls, tiled floor, extractor fan, down-lighters medicine cabinet.

**STAIRS LEADING TO FIRST FLOOR**

Access to loft via hatch, doors to bedrooms and bathroom.

**DUAL LANDING**

Left hand side access to loft via another hatch with pull down ladder

**BEDROOM 1 13'6" x 11'1" (4.11m x 3.38m)**

Rear aspect UPVC double glazed window overlooking rear garden, wood flooring, downlighters, radiator, power points, door to:

**EN-SUITE SHOWER ROOM**

A white three piece suite comprising vanity unit with inset wash hand basin with chrome style mixer tap, low level WC with concealed cistern, shower cubicle, tiled floor, tiled walls , extractor fan, downlighters, side aspect obscured UPVC double glazed window, door to:

**WALK IN WARDROBE**

Comprising hanging rail, shelving, down-lighters, extractor fan, continuation of wood flooring.

**BEDROOM 2 13'6" x 11'1" (4.11m x 3.38m)**

Front aspect UPVC double glazed window , continuation of wood flooring, power points, radiator,

**BEDROOM 3 11'0" x 9'3" (3.35m x 2.82m)**

Rear aspect UPVC double glazed window, radiator, power points, wood style flooring.

**BEDROOM 4 10'8" x 10'2" (3.25m x 3.10m)**

Front aspect UPVC double glazed window, radiator, power points, wood style flooring.

**BEDROOM 5 10'3" x 6'7" (3.12m x 2.01m)**

Front aspect double glazed window, power points, wood style flooring, radiator, dimmer switch.

**FAMILY BATHROOM**

A white three piece suite comprising low level WC, inset wash hand basin with chrome style mixer tap, moulded bath with centre drainer and chrome style , shower attachments , shower over bath, tiled walls, tiled floor, medicine cabinet, underfloor heating, rear aspect obscure UPVC double glazed window.

**OUTSIDE REAR GARDEN**

Area of decking, side access, timber built shed, area of level lawn, fencing.

**HOME OFFICE 22'8" x 10'4" (6.91m x 3.15m)**

Power, light, air conditioning unit providing heating and cooling, broadband connection, downlighters, power points.

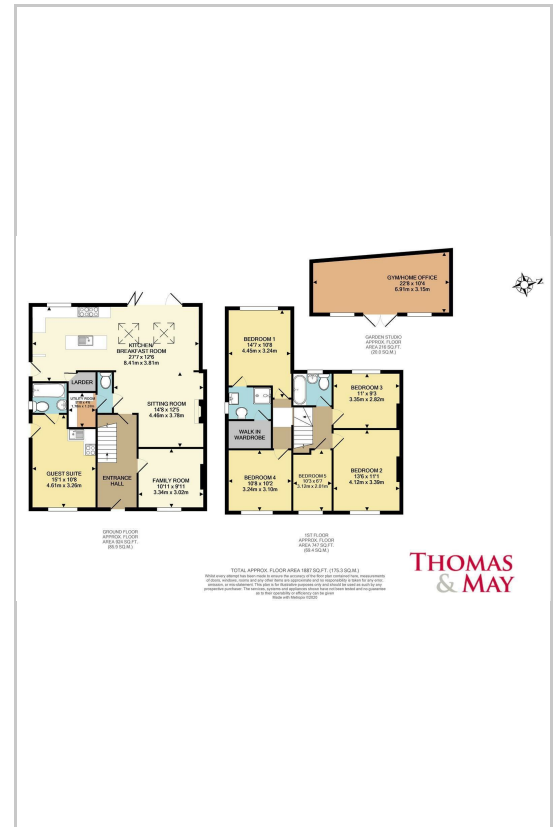
**FRONT GARDEN**

Steps and pathway leading to front door. OFF STREET PARKING for several vehicles.

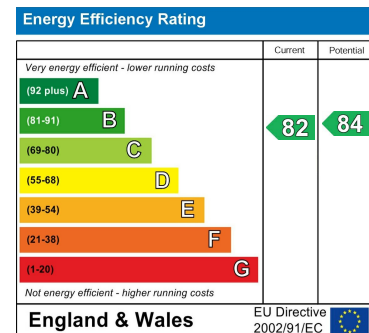
**Area Map**



**Floor Plans**



**Energy Efficiency Graph**



These particulars, whilst believed to be accurate are set out as a general outline only for guidance and do not constitute any part of an offer or contract. Intending purchasers should not rely on them as statements of representation of fact, but must satisfy themselves by inspection or otherwise as to their accuracy. No person in this firms employment has the authority to make or give any representation or warranty in respect of the property.

2-3 South Parade, School Hill, Merstham, Surrey, RH1 3RA

Tel: 01737 648048 Email: merstham@thomasandmay.com <https://www.thomasandmay.com/>